

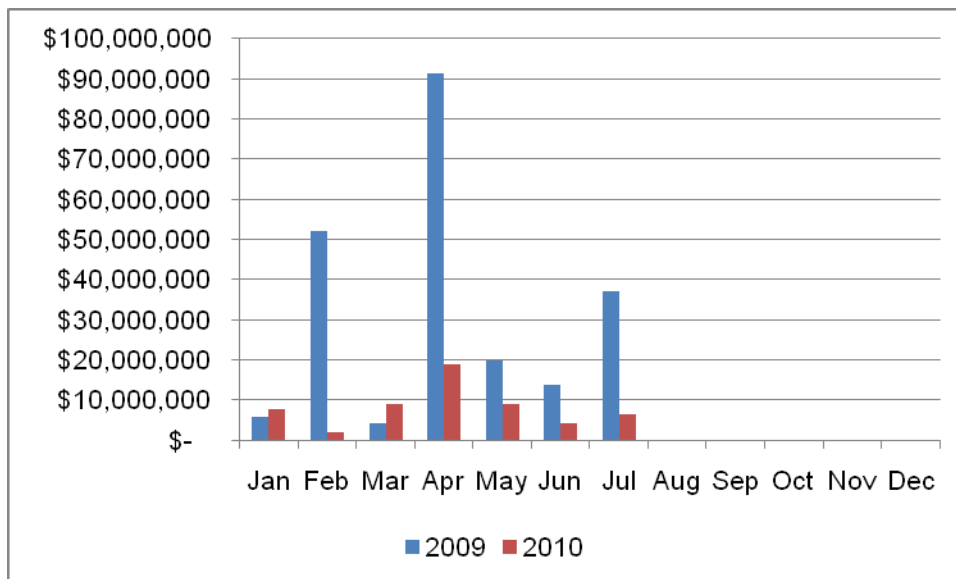


2007 - 2008 Comparison				
MSA* Non-Residential				
Year	# Permits	% Change	Value	% Change
2008	141		\$185,563,000	
2009	120	-15	\$339,625,000	83
MSA* Residential				
2008	1,293		\$250,430,000	
2009	1,096	-15	\$241,174,000	-4

July Non-Residential						
MSA* Counties	2009 # Permits	2010 # Permits	% Change	2009 Value	2010 Value	% Change
Hamilton	10	6	-40	\$33,432,000	\$6,461,000	-81
Marion	0	0	-	0	0	-
Sequatchie	0	0	-	0	0	-
Catoosa	3	0	-	\$1,654,000	0	-
Dade	0	0	-	0	0	-
Walker	3	0	-	\$1,900,000	0	-
TOTAL	16	6	-63	\$36,986,000	\$6,461,000	-83

+++ Change of 100% or more

MSA* Non-Residential Permit Value 2009-2010 Comparison

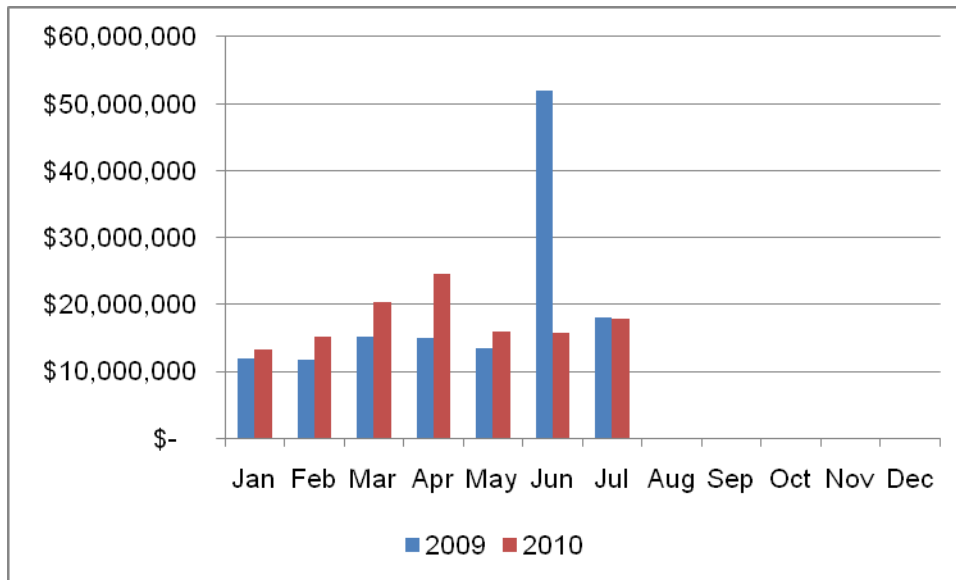




July Residential						
MSA* Counties	2009 # Permits	2010 # Permits	% Change	2009 Value	2010 Value	% Change
Hamilton	72	69	-4	\$12,605,000	\$12,756,000	1
Marion	8	5	-38	\$1,063,000	\$1,270,000	19
Sequatchie	4	3	-25	\$425,000	\$320,000	-25
Catoosa	16	11	-31	\$2,924,000	\$1,959,000	-33
Dade	2	2	-	\$302,000	\$302,000	-
Walker	7	10	43	\$819,000	\$1,191,000	45
TOTAL	109	100	-8	\$18,138,000	\$17,798,000	-2

+++ Change of 100 % or more

MSA* Residential Permit Value 2009-2010 Comparison



* Metropolitan Statistical Area (MSA) includes Hamilton, Marion and Sequatchie counties in TN and Catoosa, Dade and Walker counties in GA.

Source: F. W. Dodge Division, The McGraw-Hill Companies, Inc.